

Retail Space for Lease

Suites 102-103 | 5960 Getwell Road | Southaven, MS



This highly coveted space in the fast growing city of Southaven, MS is located right next to Snowden Grove Park and is currently built out as a high-end hair salon and spa. This ground floor retail space can accommodate many different uses including retail, professional offices, medical, hair or spa use, and many more. Lease rate does not include utilities, property expenses or building services.

AMENITIES

- 2,725 SF
- space in excellent condition and has central air and heating
- Ample parking for customers and employees
- Ceilings are high and exposed
- Signage on the building facing Nail Road and pylon on Getwell Road.
- Many lunch and dinner restaurants at the property.

Don't miss this opportunity to join other tenants in this popular mixed-use center, including Lost Pizza, Mesquite Chop House, 10th Inning Bar & Grill, Edward Jones Investments, Impressions Aesthetics, and Guaranty Bank.

2024 Summary	1 mile	3 miles	5 miles
Population	5,091	33,673	75,745
Households	1,742	12,316	28,538
Average Household Income	\$134,266	\$128,987	\$110,585
Median Household Income	\$109,404	\$100,968	\$84,630

All information deemed reliable but not warranted.

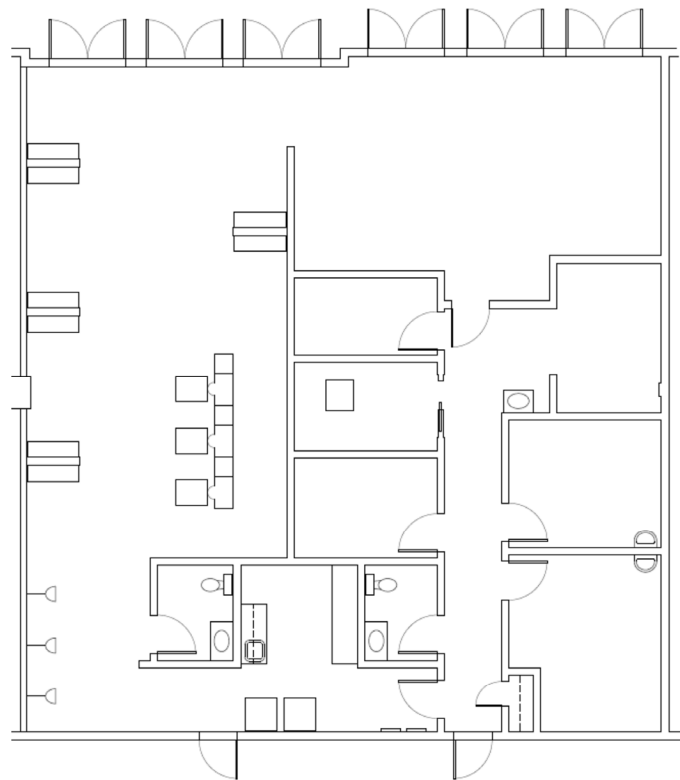
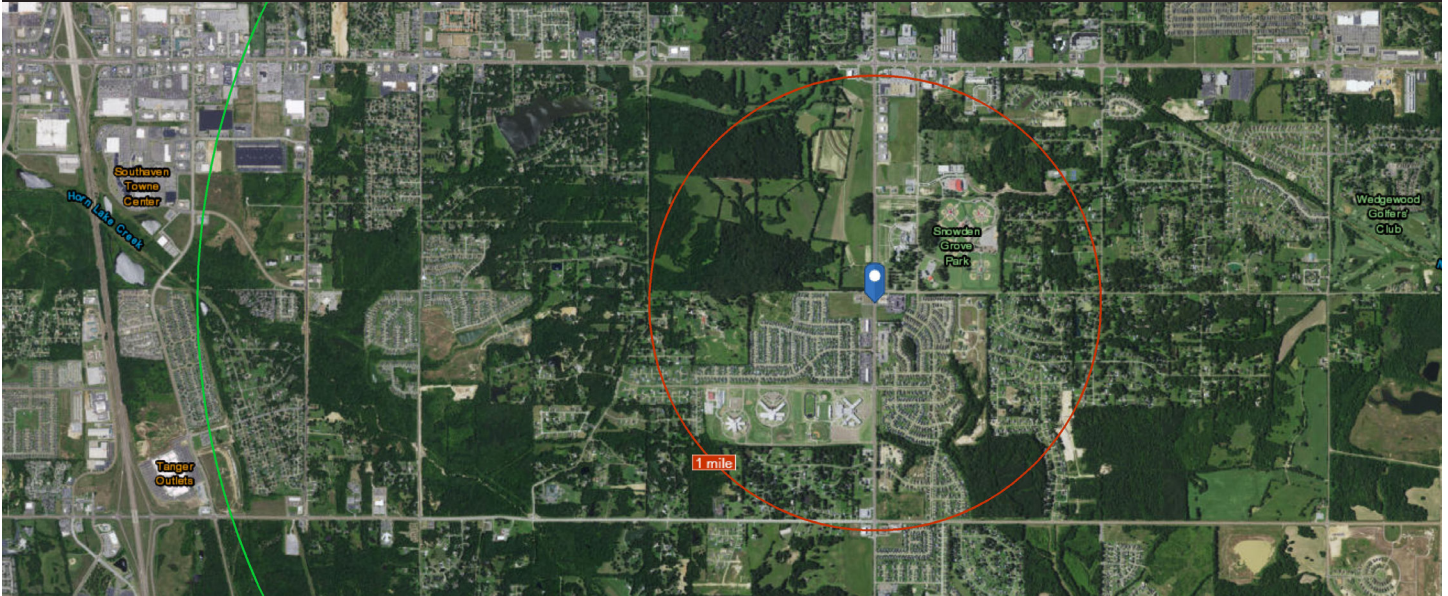
FOR INFORMATION CONTACT:

Roger A. McLemore, CCIM
Vice President of Commercial
Property Services
901.507.3428
rmclmore@mrgmemphis.com

Makowsky Ringel Greenberg, LLC
1010 June Road, Suite 200
P.O. Box 241990
Memphis, TN 38124
Phone: 901.683.2220
Fax: 901.507.3440

www.mrgmemphis.com/commercial

5960 Getwell Road



FOR INFORMATION CONTACT:

Roger A. McLemore, CCIM
Vice President of Commercial Property Services
901.507.3428
rmclemore@mrgmemphis.com

