

1.6 Acres for Ground Lease

4085 Thomas Street, Memphis, TN 38127



Flexible outdoor and indoor storage all in one place.

FEATURES

- 1.6 acres of land for ground lease in North Memphis on Highway 51
- Location is on a major highway at a busy intersection of Highway 51 and North Watkins Street
- Lot is a secure corner parcel part of a larger mini-storage facility with available units if inside storage is required
- Zoned CMU-III for many ideal uses in the area such as outdoor storage, landscaping or construction equipment, parking, or commercial development
- Parcel can be fenced, subdivided, secured as needed for many different uses
- Can be paved, graveled, or combination of both pending the customer's needs
- Private gated entrance to the facility and property is well-lit at night

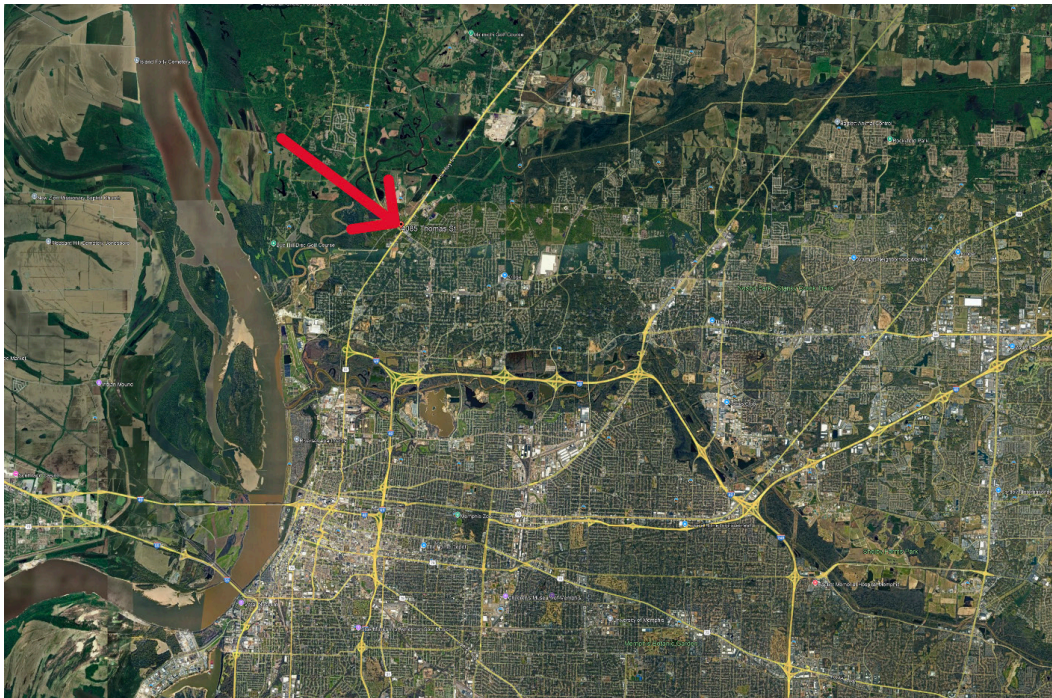
FOR INFORMATION CONTACT:

Roger McLemore
Vice President
901.507.3428
rmclemore@mrgmemphis.com

Makowsky Ringel Greenberg, LLC
1010 June Road, Suite 200
P.O. Box 241990
Memphis, TN 38124
Phone: 901.683.2220
Fax: 901.507.3440

www.mrgmemphis.com/commercial

4085 Thomas Street



Makowsky Ringel Greenberg, LLC
1010 June Road, Suite 200
P.O. Box 241990
Memphis, TN 38124
Phone: 901.683.2220
Fax: 901.507.3440

 **Makowsky
Ringel
Greenberg** LLC
Multi-Family & Commercial Real Estate