

Retail Space for Lease

5960 Getwell Road | Southaven, MS



Lease 3,264 square feet in Southaven's iconic Town Square. This space is ideal for a wide array of retail uses including a high-end ladies' boutique or other apparel storefront, yoga or fitness studios, or even office space.

AMENITIES

- 3,264 sf available for lease at established retail center in Southaven, MS.
- Highly-desired end unit with beautiful glassline and open showroom.
- Space is located facing Snowden Grove Park at the entrance to the property.
- Ample parking with access on two sides of the building.
- Signage on the building facing Nail Road and pylon on Getwell Road.
- Many lunch and dinner restaurants at the property.
- Patio use as approved by Landlord.

Don't miss this opportunity to join other tenants in this popular mixed-use center, including Lost Pizza, Mesquite Chop House, 10th Inning Bar & Grill, Edward Jones Investments, Impressions Aesthetics, and Guaranty Bank.

2024 Summary	1 mile	3 miles	5 miles
Population	5,091	33,673	75,745
Households	1,742	12,316	28,538
Average Household Income	\$134,266	\$128,987	\$110,585
Median Household Income	\$109,404	\$100,968	\$84,630

All information deemed reliable but not warranted.

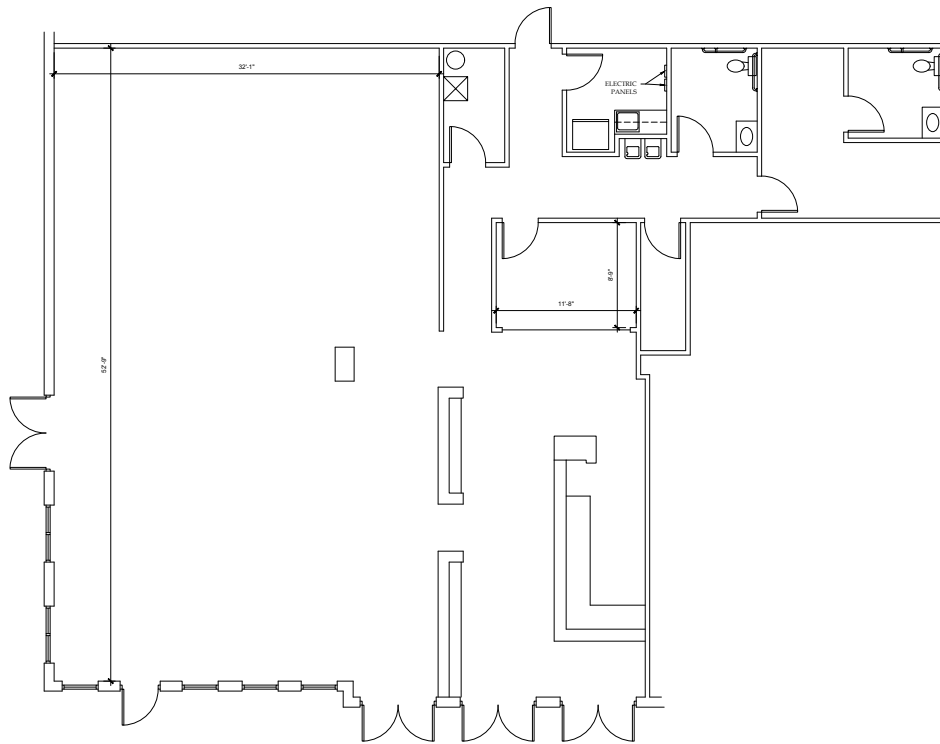
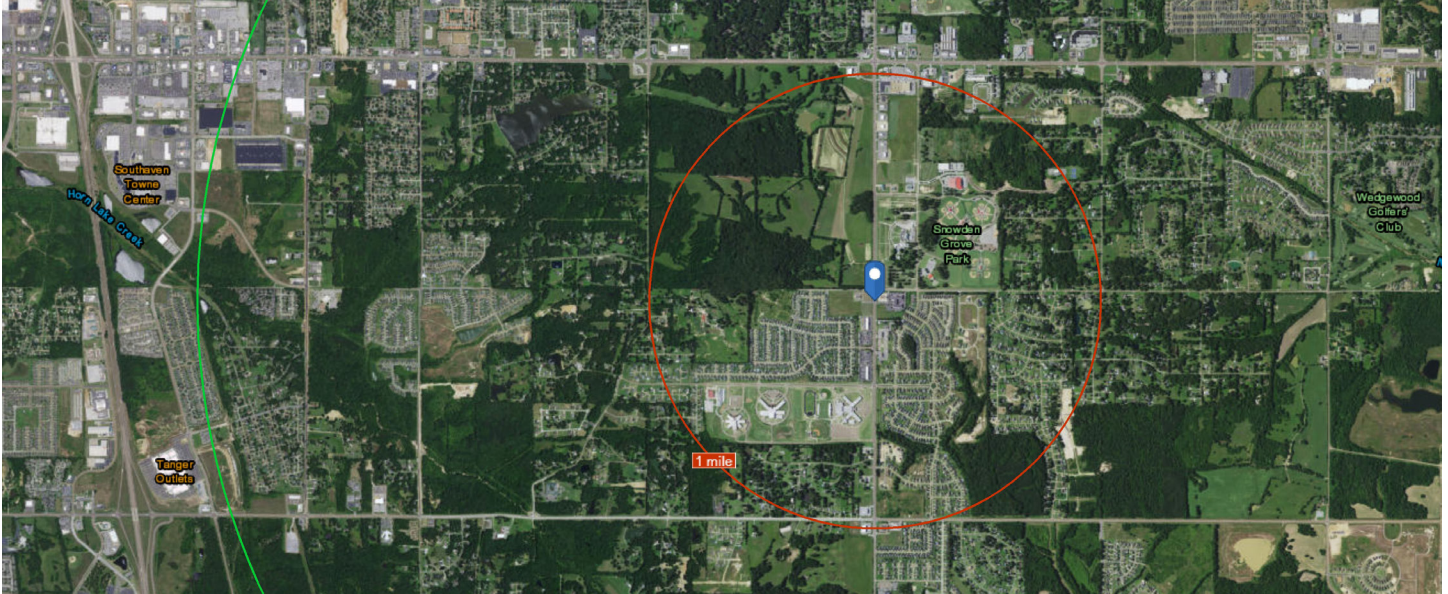
FOR INFORMATION CONTACT:

Roger A. McLemore, CCIM
Vice President of Commercial
Property Services
901.507.3428
rmclemore@mrgmemphis.com

Makowsky Ringel Greenberg, LLC
1010 June Road, Suite 200
P.O. Box 241990
Memphis, TN 38124
Phone: 901.683.2220
Fax: 901.507.3440

www.mrgmemphis.com/commercial

5960 Getwell Road

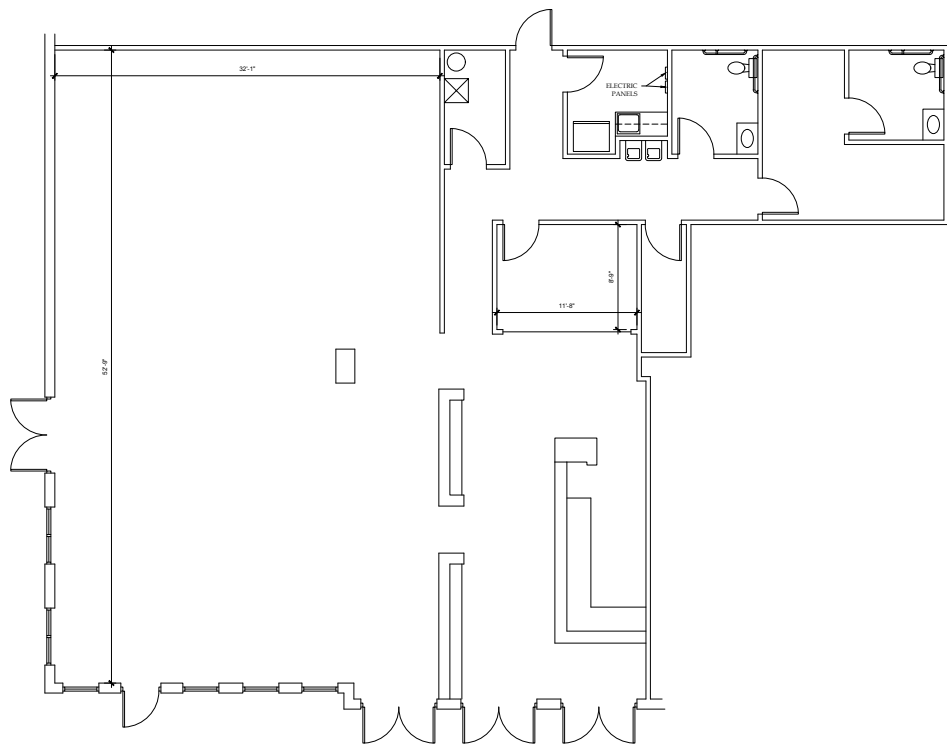


NORTH

FOR INFORMATION CONTACT:

Michael Greenberg, CCIM, CPM
Chief Executive Officer
901.507.3429
mgreenberg@mrghmemphis.com





↓
NORTH