

# 2,133 SF Office Space for Lease

5960 Getwell Road | Southaven, MS



Conveniently situated on Getwell Road off the heavily-traveled Goodman Road, this well-configured office space in Town Square is the ideal central N. Mississippi location for serving clients in Southaven, Olive Branch and expanding neighborhoods to the south. Easy access at the lighted intersection of Getwell and Nail Roads with abundant parking.

- Competitive lease terms
- Excellent demographics
- Abundant customer parking
- Highly-visible monument signage
- Other tenants in this popular mixed-use center, include Lost Pizza, Mesquite Chop House, Edward Jones Investments, Belle Ross Salon and Spa, and Impressions Aesthetics.

2024 Summary	1 mile	3 miles	5 miles
Population	7,462	30,200	72,520
Households	2,458	10,621	26,253
Average Household Income	\$117,670	\$110,517	\$96,473
Median Household Income	\$94,962	\$92,094	\$79,188

All information deemed reliable but not warranted.

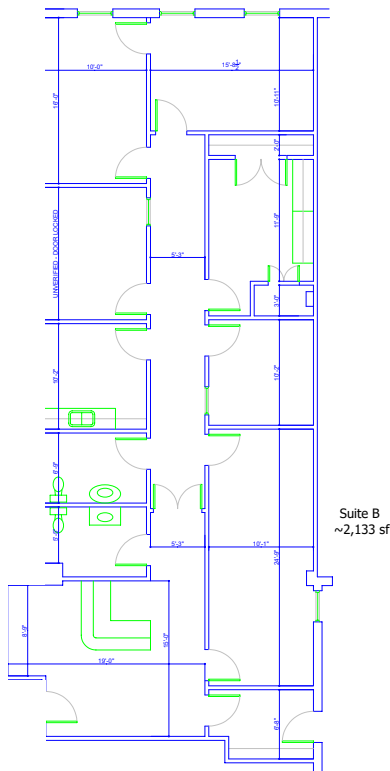
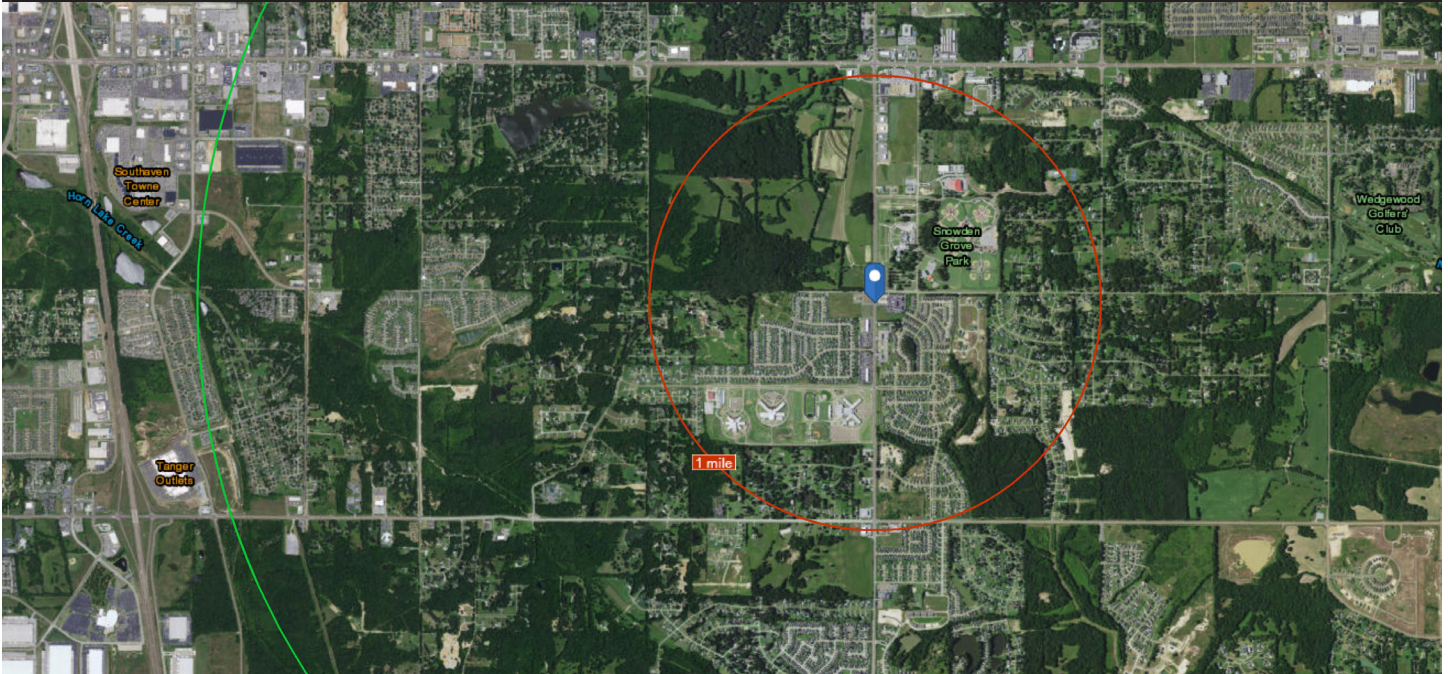
## FOR INFORMATION CONTACT:

**Michael Greenberg, CCIM, CPM**  
Chief Executive Officer  
901.507.3429  
mgreenberg@mrgmemphis.com

**Makowsky Ringel Greenberg, LLC**  
1010 June Road, Suite 200  
P.O. Box 241990  
Memphis, TN 38124  
Phone: 901.683.2220  
Fax: 901.507.3440

[www.mrgmemphis.com/commercial](http://www.mrgmemphis.com/commercial)

# 5960 Getwell Road



## FOR INFORMATION CONTACT:

**Michael Greenberg, CCIM, CPM**  
Chief Executive Officer  
901.507.3429  
mgreenberg@mrghmemphis.com





# 5960 Getwell Road



**FOR INFORMATION CONTACT:**  
**Michael Greenberg, CCIM, CPM**  
Chief Executive Officer  
901.507.3429  
mgreenberg@mrghmemphis.com

 **Makowsky  
Ringel  
Greenberg** LLC  
Multi-Family & Commercial Real Estate



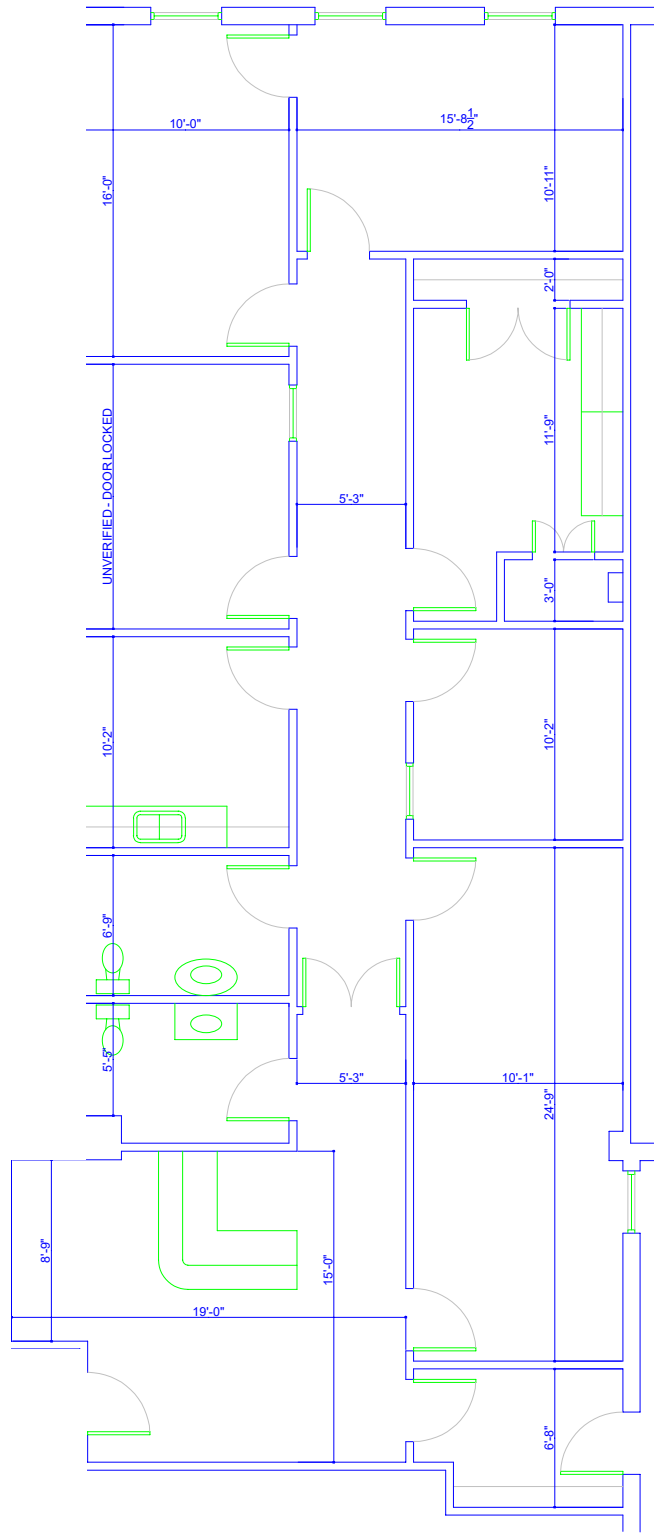
# 5960 Getwell Road



## FOR INFORMATION CONTACT:

**Michael Greenberg, CCIM, CPM**  
Chief Executive Officer  
901.507.3429  
mgreenberg@mrgmemphis.com

 **Makowsky  
Ringel  
Greenberg** LLC  
Multi-Family & Commercial Real Estate



Suite B  
~2,133 sf